

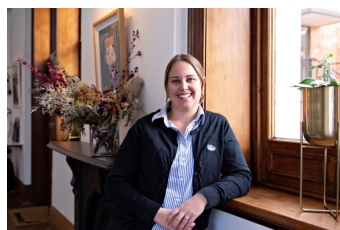


22 Sea Crescent Dubbo NSW

4 2 2

- * 4 Bedrooms with built ins
- * Main with ensuite and walk in robe
- * Open plan kitchen, dining & living area
- * Modern kitchen with stone benchtops, SMEG appliances
- * Study nook
- * Family bathroom with separate toilet
- * Ample storage
- * Ducted reverse cycle air conditioning
- * Undercover outdoor entertainment area with gas point
- * Fully fenced yard with water front views of the Southlakes waterways
- * Double garage with remote and internal access.
- * Pet on application, Subject to approval.

View : <https://www.boberry.com.au/lease/nsw/dubbo-ora/dubbo/residential/house/7621813>



Shayna Chapman
02 6882 6822

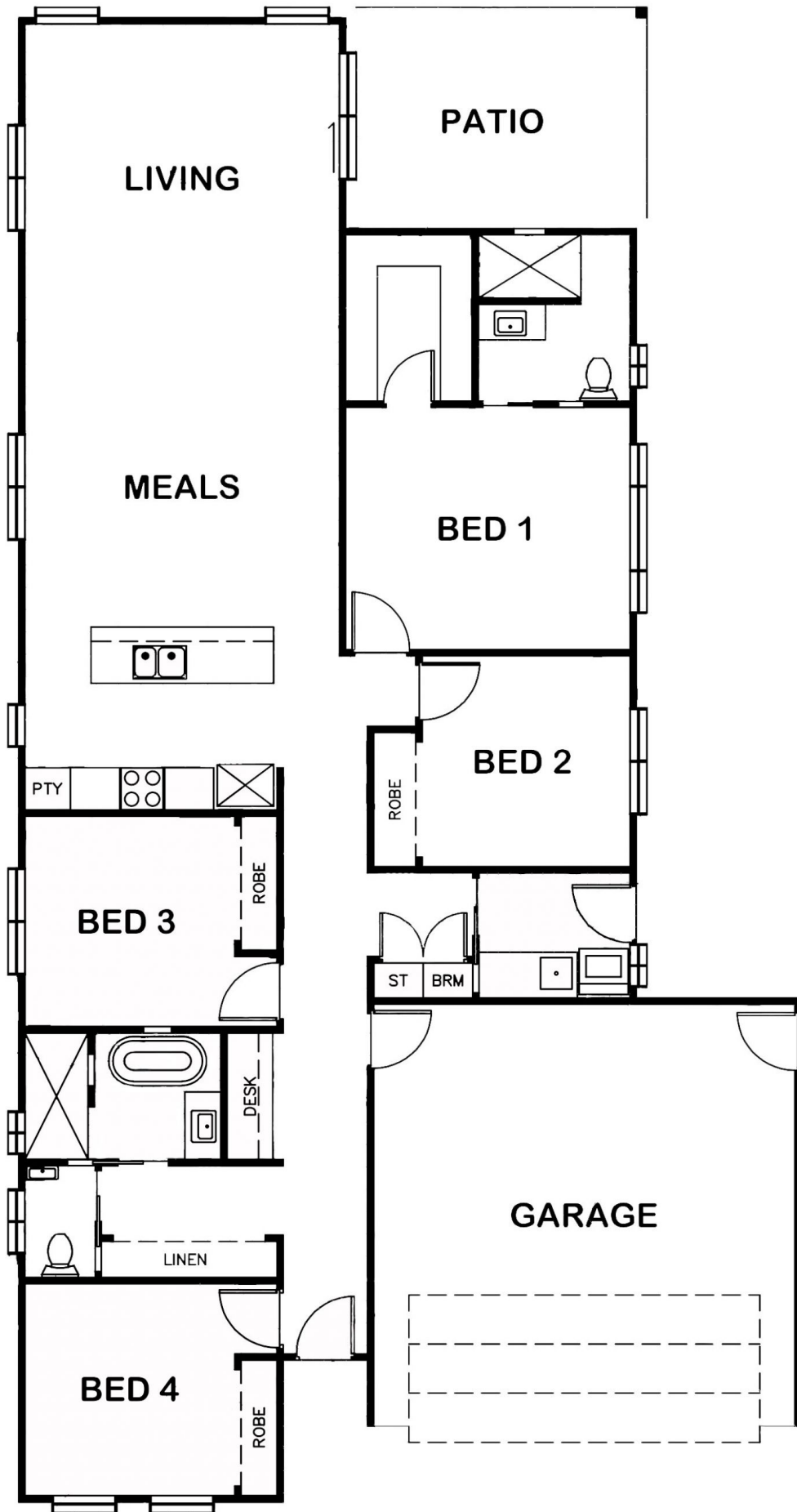


Jennifer McGrath
02 6882 6822

AVAILABLE NOW

LEASE TERM: 6 or 12 months

<https://www.boberry.com.au>



22 Sea Crescent

BOB BERRY
REAL ESTATE