

## 6 Warne Street Wellington NSW

3 1 1

Circa 1920's double brick residence surround by similar homes within a short stroll to pool, pub, cafes, supermarkets, schools and shops.

From the large front verandah to the formal entry you will love the period features including brick fireplaces, high ornate ceilings and lead light windows. Positioned on a large 999 sq m block including a North facing back yard there is scope for a pool or garage/shed STCA.

Ideal to move into straight away with scope for further enhancements over time the home has been recently leased fully furnished. With a spacious floor plan offering multiple living rooms and bedrooms this is a true family home.

[For full version visit the website](https://www.boberry.com.au)

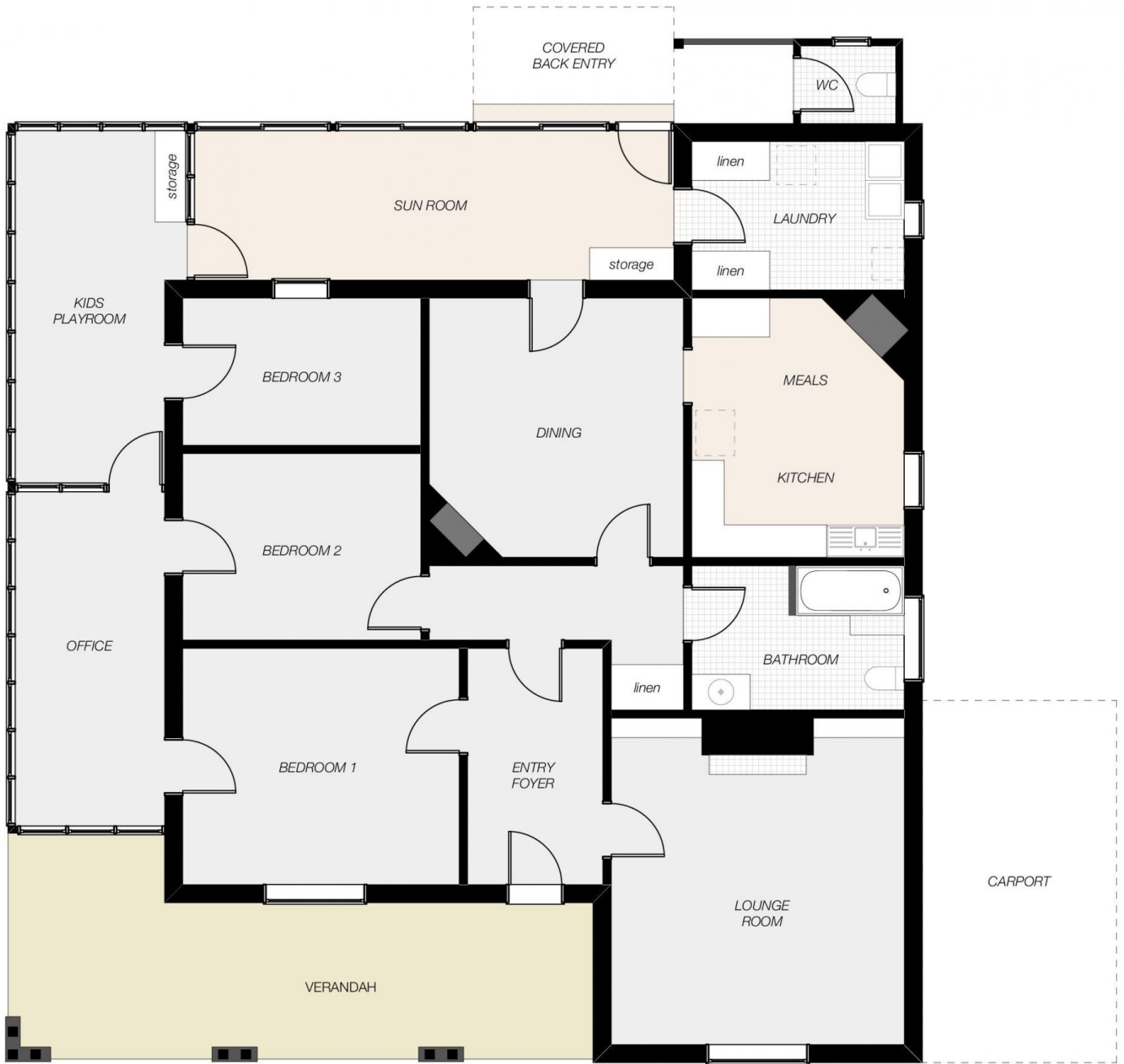
**Type** : House  
**Price** : \$ 375,000  
**Land Size** : 999 sqm  
**View** : <https://www.boberry.com.au/sale/nsw/dubbo-orana/wellington/residential/house/7374658>



**Jane Donald**  
02 6882 6822



**Graeme Board**  
02 6882 6822



## 6 WARNE STREET, WELLINGTON

*PLAN DISCLAIMER: This diagram is for illustrative purposes only. All reasonable care has been taken in the preparation, but no warranty is given as to the accuracy of the information. This document does not constitute any part of any offer or contract. Any dimensions shown are approximate only. Prospective purchasers must rely on their own enquiries.*

*Plans prepared by **Design Tribe Dubbo** on behalf of Bob Berry Real Estate  
www.designtribedubbo.com.au*

