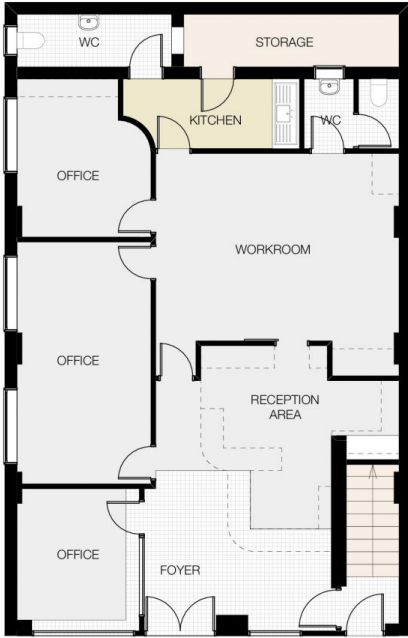


21 Church Street Dubbo NSW

**Type** : Offices  
**Building Size** : 128 sqm  
**Land Size** : 171 sqm  
**View** : <https://www.bobberry.com.au/sale/nsw/dubbo-orana/dubbo/commercial/offices/7374609>



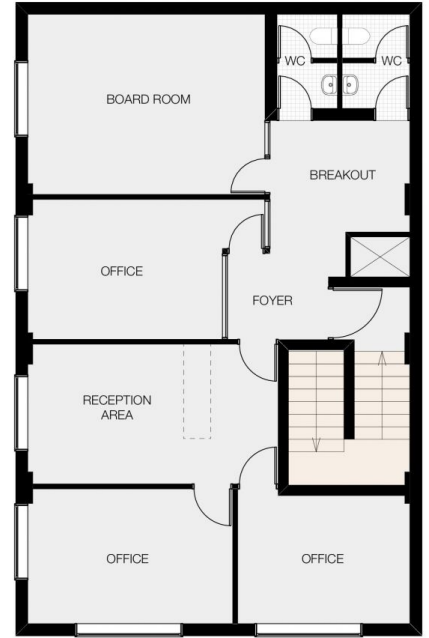
**Graeme Board**  
02 6882 6822



GROUND FLOOR



FIRST FLOOR



SECOND FLOOR

## 21 CHURCH STREET, DUBBO



PLAN DISCLAIMER: This diagram is for illustrative purposes only. All reasonable care has been taken in the preparation, but no warranty is given as to the accuracy of the information. This document does not constitute any part of any offer or contract. Any dimensions shown are approximate only. Prospective purchasers must rely on their own enquiries.

Plans prepared by **Design Tribe Dubbo** on behalf of Bob Berry Real Estate  
[www.designtribedubbo.com.au](http://www.designtribedubbo.com.au)