



47A Simpson Street Wellington NSW

3 2 1

Circa 1920's double brick residence positioned in a fabulous location opposite Rygate Park, within a short stroll to cafes, supermarkets, schools and shops.

From the large front verandah to the formal entry with timber cabinetry and window seat you will love the period features including brick fireplaces, high ornate ceilings and lead light windows.

Ideal to move into straight away with scope for further enhancements over time the home has been recently leased fully furnished for \$490 p/w.

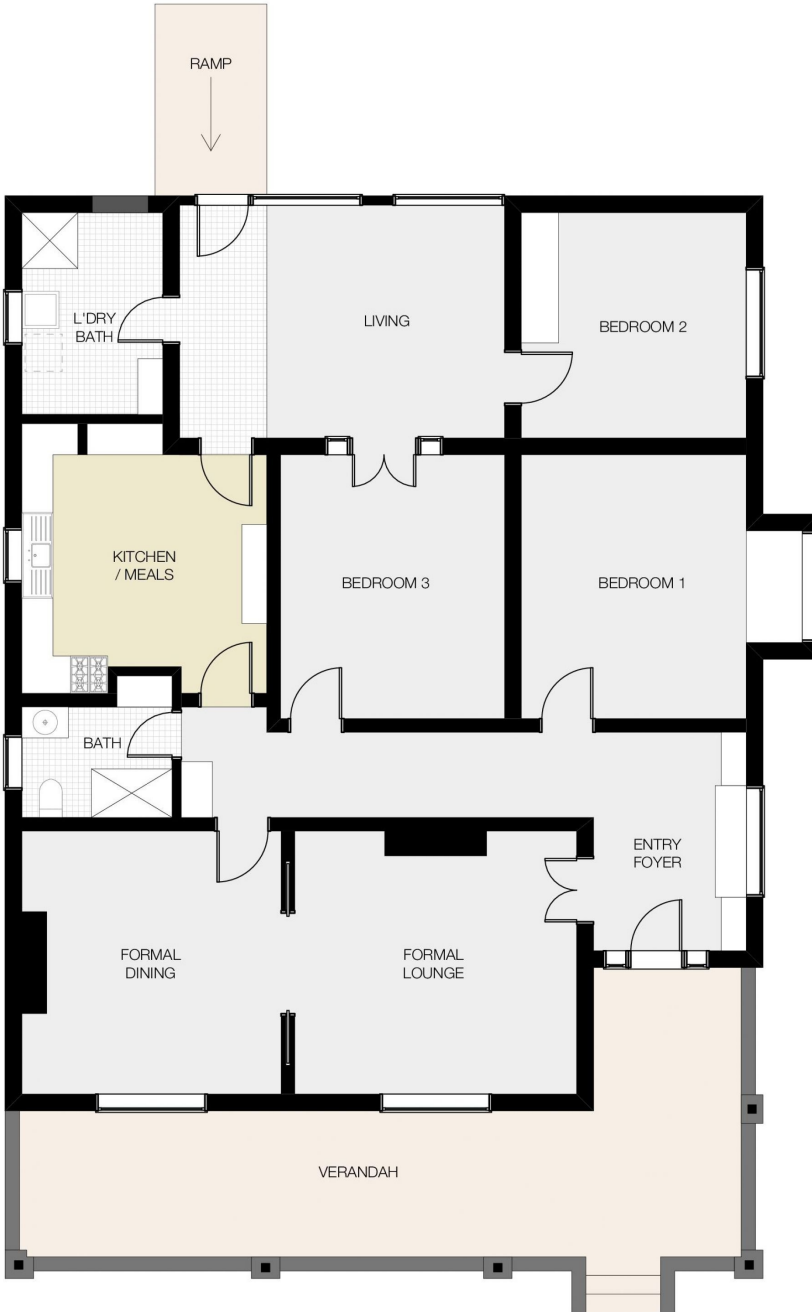
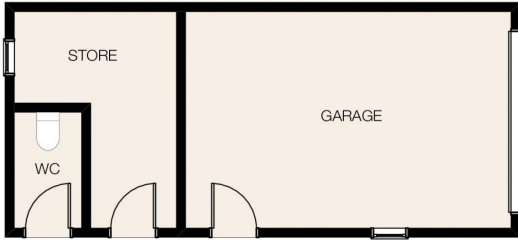
- 3 bedrooms, main bedroom with window seat
- Spacious formal lounge and dining rooms with ornamental

[For full version visit the website](https://www.boberry.com.au)

Type : House
Price : \$ 341,000
Land Size : 632 sqm
View : <https://www.boberry.com.au/sale/nsw/dubbo-orana/wellington/residential/house/7374603>



Jane Donald
02 6882 6822



47A SIMPSON STREET, WELLINGTON

PLAN DISCLAIMER: This diagram is for illustrative purposes only. All reasonable care has been taken in the preparation, but no warranty is given as to the accuracy of the information. This document does not constitute any part of any offer or contract. Any dimensions shown are approximate only. Prospective purchasers must rely on their own enquiries.

Plans prepared by **Design Tribe Dubbo** on behalf of Bob Berry Real Estate
www.designtribedubbo.com.au