



11 Oxley Circle Dubbo NSW

3 1 3

This well-maintained brick veneer home offers plenty of living area inside and out and is perfect for first home buyers looking for an established home.

Enjoy separate living, family and east facing sunroom with the living room having access to the front patio and paved, covered entertaining area. There is also a handy office area at the back of the garage, perfect for the home office. The shady back yard offers a great space with hand storage in two sheds.

Located close to schools, local shops, bus route, hospitals, TAFE, university & Orana Mall.

Don't miss an excellent opportunity. This solid, affordable

[For full version visit the website](https://www.bobberry.com.au)

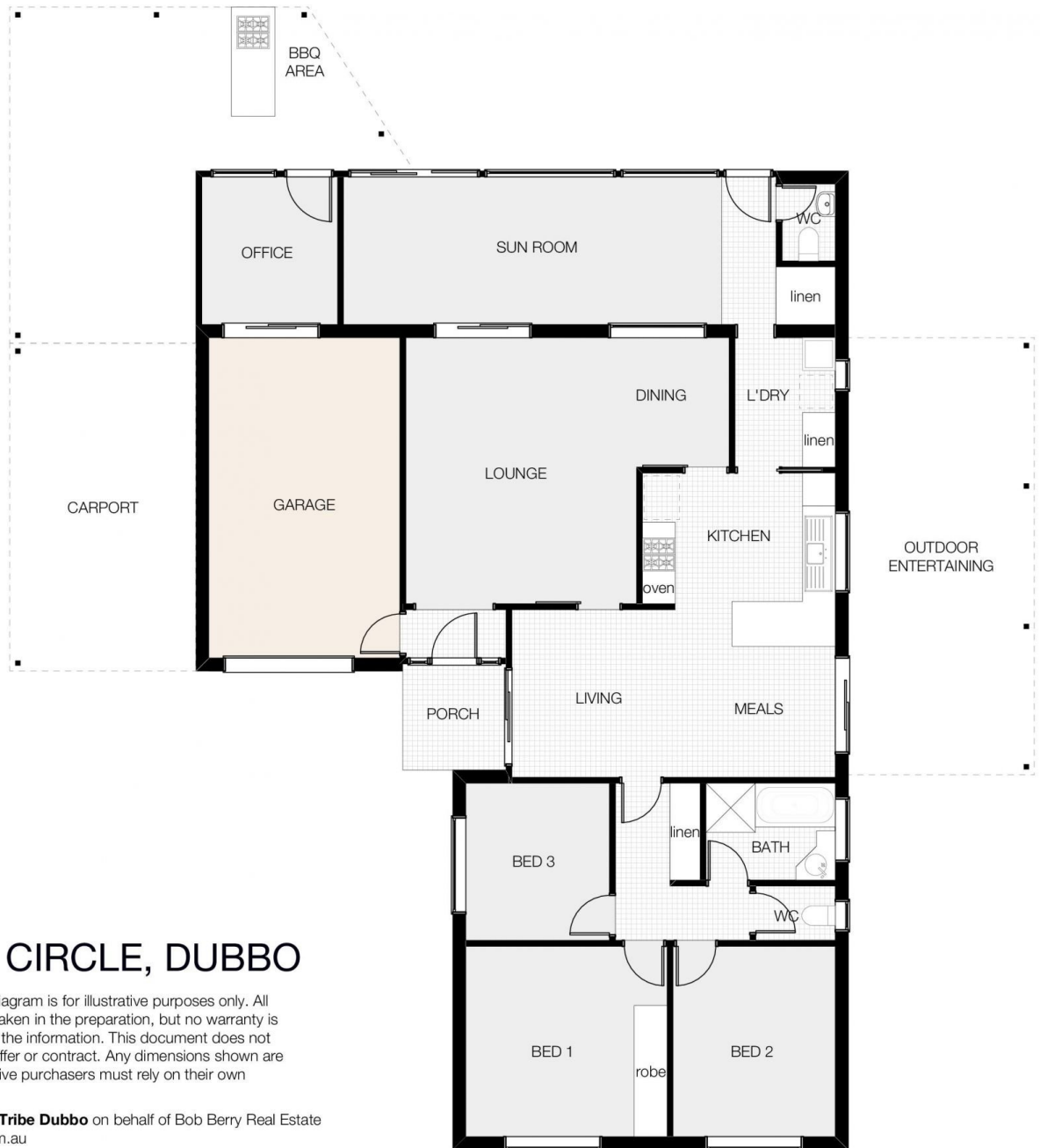
Type : House
Price : \$ 435,000
Building Size : 155 sqm
Land Size : 747 sqm
View : <https://www.bobberry.com.au/sale/nsw/dubbo-orana/dubbo/residential/house/7374599>



Jane Donald
02 6882 6822



Elle Crisp
02 6882 6822



11 OXLEY CIRCLE, DUBBO

PLAN DISCLAIMER: This diagram is for illustrative purposes only. All reasonable care has been taken in the preparation, but no warranty is given as to the accuracy of the information. This document does not constitute any part of any offer or contract. Any dimensions shown are approximate only. Prospective purchasers must rely on their own enquiries.

Plans prepared by **Design Tribe Dubbo** on behalf of Bob Berry Real Estate
www.designtribedubbo.com.au