



13 Charmere Place Dubbo NSW

5 2 2

Simply one of the most appealing modern country homes in Dubbo, this magnificent family home is privately positioned in a quiet cul-de-sac in Sheraton Meadows. From the moment you enter, lush, low maintenance gardens and visitors parking area guide you to a picturesque residence.

Set on approximately one acre, this extensive property offers a wonderful lifestyle opportunity. Fully equipped with enough room for the extended family, the property comes with a full size tennis court, in ground swimming pool and a large undercover outdoor area ideal for relaxing or entertaining.

Set well back from the road, the home offers peace, privacy and tranquility whilst being only minutes to a selection of schools, cafes, restaurants, child care, Bunnings, Brewery, Blueridge Business Park, Orana Mall, Macquarie Inn, medical centre, Japanese Gardens and Elizabeth Park.

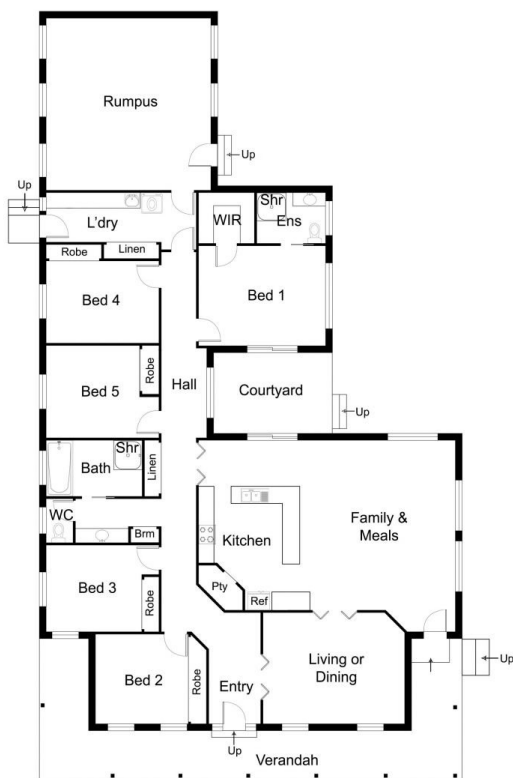
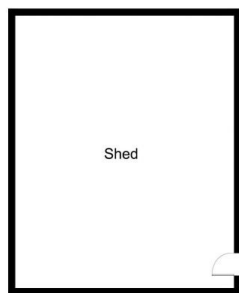
- Four generous bedrooms, built-ins/walk-in
- Walk in robe & renovated ensuite to the main
- Fifth bedroom or optional home office
- North facing family and meals area
- Country kitchen with double oven, gas, dishwasher

[For full version visit the website](https://www.bobberry.com.au)

Type : House
Land Size : 4229 sqm
View : <https://www.bobberry.com.au/sale/nsw/dubbo-o-orana/dubbo/residential/house/7374469>



Bob Berry Real Estate
02 6882 6822



FLOOR PLAN

This floor plan including furniture, fixture measurements and dimensions are approximate and for illustrative purposes only
Boxbrownie.com gives no guarantee, warranty or representation as to the accuracy and layout.
All enquiries must be directed to the agent, vendor or party representing this floor plan.

13 Charmere Place