



16 Murrayfield Drive Dubbo NSW

3 1 1

This much loved home is bursting with potential and offers a great starting point for first home buyers, young families, home renovators or investors.

Located in family-friendly Eastridge Estate, it is an easy walk to Troy Gully reserve with walking trails and only a short drive to schools, shops, cafes, restaurants, Bunnings, Macquarie Inn, Elizabeth Park, TAFE, hospital & university.

With potential to add your personal touches, the tidy property features two living areas, ducted evaporative air conditioning and gas points.

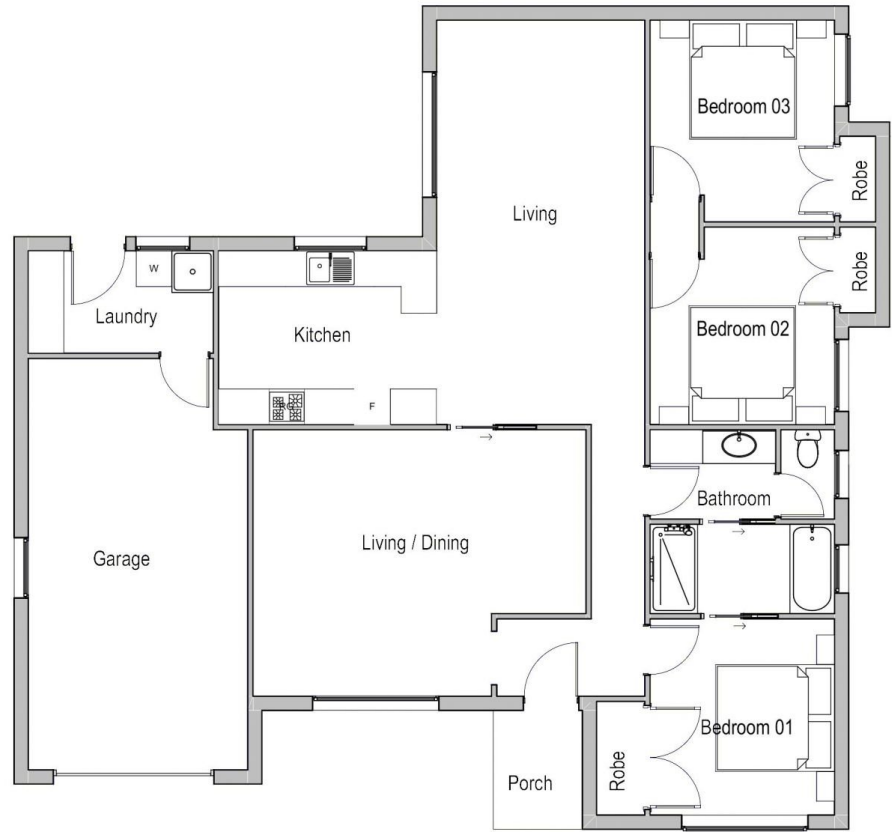
Do your sums, check your finance approval and act quickly.

[For full version visit the website](https://www.bobberry.com.au)

Type : House
Price : \$ 387,500
Land Size : 760 sqm
View : <https://www.bobberry.com.au/sale/nsw/dubbo-o-orana/dubbo/residential/house/7374269>



Bob Berry Real Estate
02 6882 6822



16 MURRAYFIELD DR DUBBO

Floor Plan 

This floor plan including furniture, fixture measurements and dimensions are approximate and for illustrative purposes only. Bob Berry Real Estate gives no guarantee, warranty or representation as to the accuracy and layout. All enquiries must be directed to the agent, vendor or party representing this floor plan.